



B&B
attachments



THE QUICK RELEASE SYSTEM
to interchange forklift attachments

 **PowerMount**



Partner of choice for the forklift truck industry



PowerMount

PowerMount, from B&B Attachments is a quick release system which provides a faster, easier and safer way to interchange forklift attachments. Attachments can now be safely engaged and disengaged by the driver in 60 - 90 seconds, making your forklift fleet highly flexible and more cost effective.

As a result of enquiries from major fleet users in the forklift industry, B&B Attachments has developed PowerMount - a unique system that quickly changes one hydraulic attachment, such as a popular double pallet handler to another, which may be required instantly to move a specialist load. The PowerMount enables attachment changes in a matter of just 60 - 90 seconds, without the need for an engineer, guaranteeing a fast, easy and safe way to interchange forklift attachments.

It also allows one forklift truck to use several attachments, providing the best possible utilisation of a

forklift fleet. PowerMount has the potential to severely cut fleet costs and provide better utilisation of the forklift fleet. This allows the workforce to operate with fewer trucks, as witnessed on several sites currently using PowerMount.

Forklift trucks fitted with dedicated attachments can restrict the use of the truck to only a few hours a day, effectively paying for the truck to sit idle for a large amount of time. The quick release coupler system, with up to 3 hydraulic function connections available, can quickly and easily allow the operator to change attachments without an engineer.

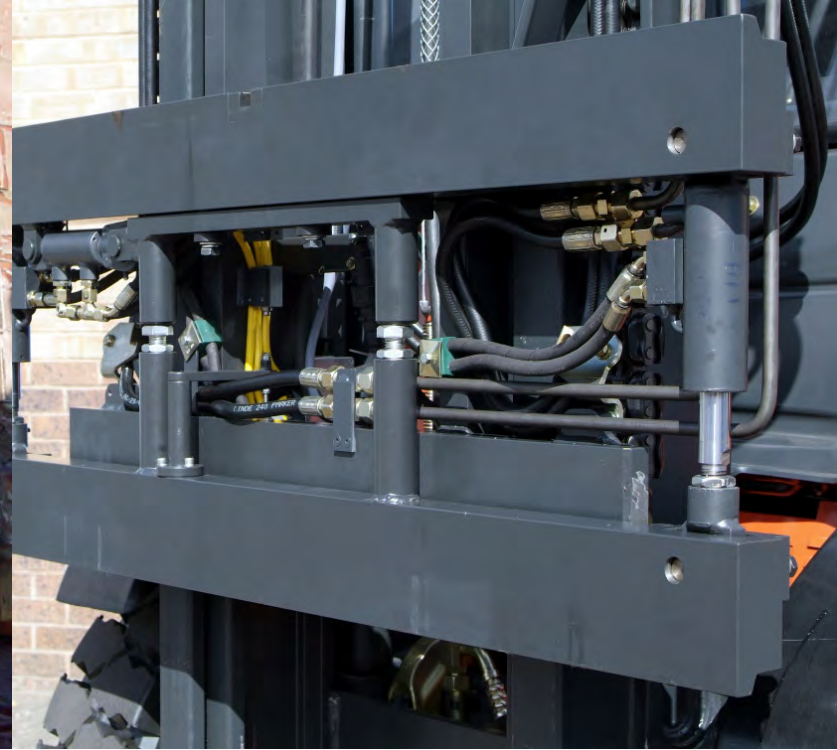
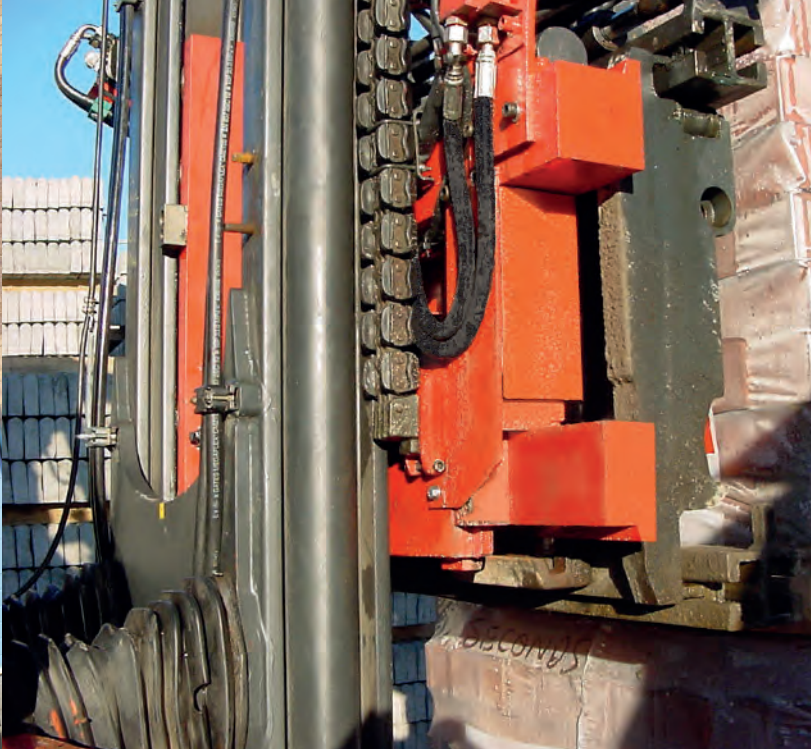
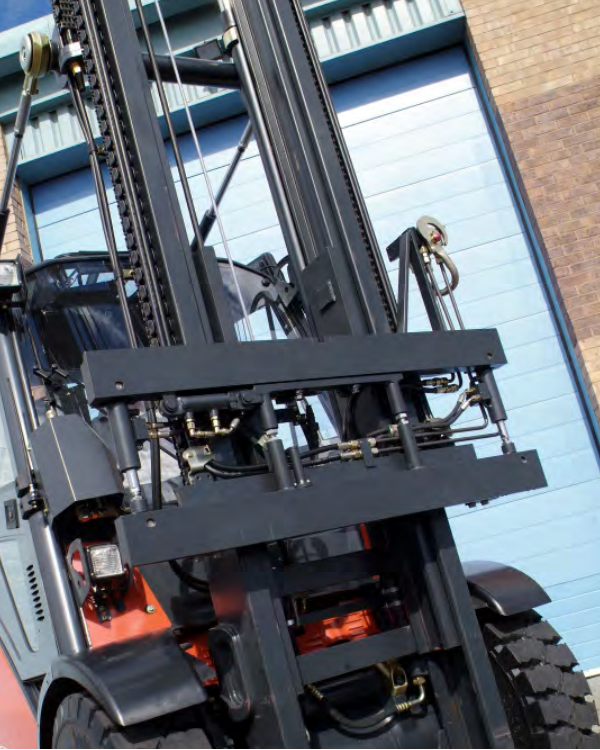
The PowerMount system also enhances on-site safety, as operators are more likely to select the right equipment to perform each task, rather than compromising by trying to use whatever attachment they have fitted at the time. The unique locking bar safety system with visual

alarm makes the Powermount a safe and easy tool for operators to use.

PowerMount is the essential requirement for any company using more than one forklift attachment.



B&B
attachments



Options

Integral mount or hang on unit to suit virtually any truck.

Quick release coupler system with up to 4 hydraulic connections available and 1 seven pin electrical supply to attachments.

Available in Class 3 and 4 carriage sizes (All options subject to truck type and site survey.)

Specifications of ISO3A unit

Capacity: 5000Kg @ 500mm Load centre

Lost load: 100mm Mass: 312Kg (Integral unit)

CofG: 115mm Mounting: To suit Truck

Hydraulics required: 1 Width (A): 1300mm

Pressure Required: 170 Bar Max

Key points

- Allows one hydraulic attachment to be changed to another in 60 – 90 seconds
- Existing as well as new attachments can be easily made ready for use with PowerMount
- Quick and simple – the operator can now change attachments without an engineer
- Visibility through the PowerMount is exceptional – very close to a standard forklift truck carriage
- The weight and lost load of the unit are minimal, so host truck deration is very low
- Uncomplicated design and reliable proven movement
- Can be fitted to virtually any forklift truck
- Visual and audible warnings to ensure attachments are secure
- Attachment hydraulics are coupled, even under full truck pressure
- Backed up by B&B Attachments national service coverage
- Severely reduce operational costs
- Utilise your forklift fleet more effectively
- Reduces risk of accidents through incorrect equipment use



B&B
attachments



Unit 46
Colbourne Avenue
Nelson Park
Cramlington
Northumberland
NE23 1WD
United Kingdom

T: +44 (0)1670 737373
F: +44 (0)1670 736286
www.bandbattachments.com